

TELEHANDLER



# HTL 4010

## Precision and flexibility

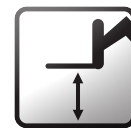
- Proportional control of movements
- Hydrostatic transmission and inching pedal

## Compact and versatile

- Stabilizers lowering on a 2,26 m width
- 5 m length
- Short turning radius
- Driving position reduces fatigue at work

## Comfort and ergonomomy

- LMI easy to read with cut off dangerous movements
- LMI easy to read with cut off dangerous movements
- Smart control 4 in 1 joystick



Placing height : 10 m



Maximum lift capacity :  
4000 kg

**Haulotte**   
GROUP

More than lifting

[www.haulotte.com](http://www.haulotte.com)



# HTL 4010



TELEHANDLER

Placing height : 10 m  
Maximum lift capacity : 4000 kg

## PERFORMANCES

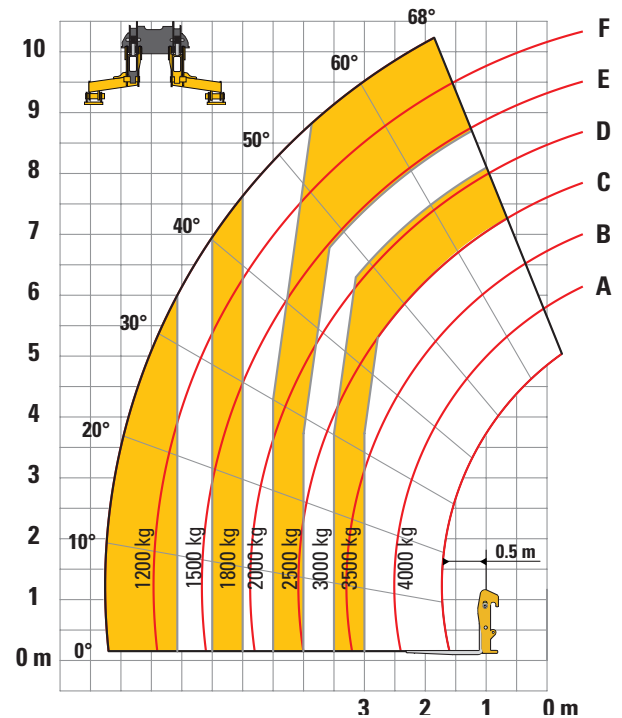
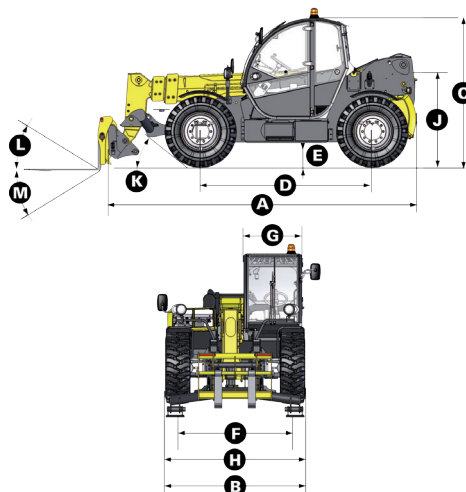
Maximum lift capacity	4000 kg
Lift capacity to full height	2500 kg
Lift capacity at full reach	1200 kg
Maximum fork height	10 m
Reach at maximum fork height	2.2 m
Maximum forward reach	7.2 m

## DIMENSIONS

<b>A</b> Length	4.96 m
<b>B</b> Width	2.26 m
<b>C</b> Height	2.42 m
<b>D</b> Wheelbase	2.78 m
<b>E</b> Ground clearance	42 cm
<b>F</b> Track width	1.88 m
<b>G</b> Cab width	0.96 m
<b>H</b> Height to high boom pivot	1.6 m
<b>J</b> Approach angle	30°
<b>K</b> Upper rotation of forks	18°
<b>L</b> Lower rotation of forks	104°
Turning radius (outside wheels)	3.7 m
Weight with forks	8630 kg
Tyres type	405/70 - 24

## ENGINE

	TIER III	TIER IV
Engine model	PERKINS	KOHLER
Engine Capacity	4400 cm <sup>3</sup>	3400 cm <sup>3</sup>
Engine power output	70 kW	55,4 kW
Engine torque	392 Nm	380 Nm
Transmission type	Hydrostatic	
Fuel tank	120 l	120 l
Engine oil	7 l	15 l



## STANDARD EQUIPMENT

- Heavy duty Hydrostatic transmission
- 4 wheel drive and steer
- Gear equipment pump
- Proportional controls for movement of boom/telescopic arm/excavation and accessories
- Safety valves on hydraulic jacks
- Possibility to combine mast/telescopic boom/excavation and accessories movements
- Auxilliary hydraulic ports
- Stabilizers lowering on a 2,26 m width
- ROPS/FOPS cabin with heating and ventilation

## OPTIONS AND ACCESSORIES

- Cold Weather Package
- Biodegradable oil
- Cold environment oil
- Hot environment oil
- Air conditioning
- Working lights
- Jibs
- Electrically hydraulic controls
- Working lights

